



# Sunlight RES SOPzS Key Advantages

Looking for the perfect balance between long cycle life and low cost in your energy system?

**RES SOPzS is the advanced, cost-effective solution** ideal for your energy storage installation!



Minimum Maintenance Requirements



Long Cycle Life up to 2400 cycles at 50% DoD



Operational Safety



Fully Recyclable Product  
Circular Economy Enabler

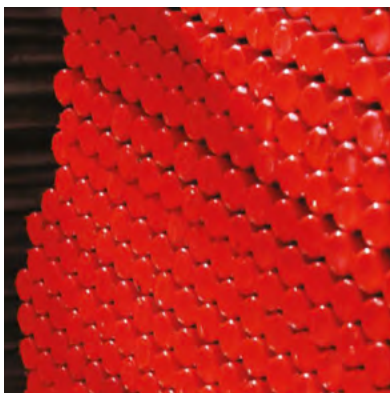


High Capacity Performance



Modular Solution  
Complete System Installation Available as Option

## The Sunlight Red Lead Advantage



### Features

**99.99%** pure lead for Red Lead production

**100%** Red Lead in our positive plates through dry filling process

**100%** plates weight control and data statistical evaluation

### Benefits

**Longer life** span of batteries

**Full Capacity** within the first 3-5 cycles

**Minimized** self-discharge

**Sustained** performance throughout battery lifetime

## Batteries with Liquid Electrolyte Main Characteristics

Vented lead-acid batteries with tubular plates for Renewable Energy Storage applications

### Pole

Specially designed pole for perfect sealing

### Vent Plugs

Electrolyte basket level marking, for visual control of electrolyte level

### Container

High impact resistant Polypropylene, translucent for easy electrolyte level monitoring

### Tubular Positive Plate

Performance and durability with ultrasonic welding of bottom bar



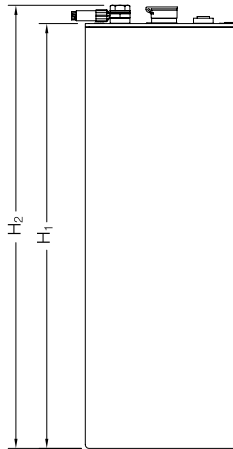


# Product Range

Model	Voltage [V]	Rated Capacity at 20°C (68°F)			Dimensions				Weight		Terminal Details
		C <sub>120</sub> / 1,85 V [Ah]	C <sub>48</sub> / 1,80 V [Ah]	C <sub>12</sub> / 1,80 V [Ah]	Length - L [mm (in)]	Width - W [mm (in)]	Height - H1 [mm (in)]	Height - H2 [mm (in)]	Wet [kg (lb)]	Dry [kg (lb)]	Number of Poles
RES 2 SOPzS 215	2	215	199	153	198 (7.80)	65 (2.56)	408 (16.06)	432 (17.01)	11.5 (25.4)	7.4 (16.3)	2
RES 3 SOPzS 310	2	310	288	222	198 (7.80)	83 (3.27)	408 (16.06)	432 (17.01)	15.4 (34.0)	10.0 (22.0)	2
RES 3 SOPzS 390	2	392	365	281	198 (7.80)	83 (3.27)	478 (18.82)	502 (19.76)	18.4 (40.6)	12.1 (26.7)	2
RES 4 SOPzS 500	2	503	470	363	198 (7.80)	101 (3.98)	478 (18.82)	502 (19.76)	23.3 (51.4)	15.4 (34.0)	2
RES 5 SOPzS 605	2	605	567	441	198 (7.80)	119 (4.69)	478 (18.82)	502 (19.76)	28.0 (61.7)	18.7 (41.2)	2
RES 4 SOPzS 720	2	721	688	539	198 (7.80)	101 (3.98)	613 (24.13)	637 (25.08)	30.5 (67.2)	21.0 (46.3)	2
RES 5 SOPzS 860	2	860	823	649	198 (7.80)	119 (4.69)	613 (24.13)	637 (25.08)	36.9 (81.4)	25.6 (56.4)	2
RES 6 SOPzS 965	2	969	933	741	198 (7.80)	137 (5.39)	613 (24.13)	637 (25.08)	43.4 (95.7)	30.2 (66.6)	2
RES 7 SOPzS 1270	2	1271	1206	941	198 (7.80)	174 (6.85)	613 (24.13)	637 (25.08)	51.6 (113.8)	35.0 (77.2)	2
RES 8 SOPzS 1380	2	1382	1318	1034	198 (7.80)	192 (7.56)	613 (24.13)	637 (25.08)	58.1 (128.1)	39.6 (87.3)	2

M10 Terminal type (applicable to all models).

All dimensions and weights shown are subject to manufacturing tolerances.



## Metallic Trays

Battery trays for complete system solutions in 12V, 24V and 48V for trouble free installation



# Applications

## Developed for Renewable Energy Systems & Demanding Cyclic Applications



Residential Installations,  
Off-Grid Power Systems

Infrastructure PV Systems



Remote Telecom Stations



Water Pumping Systems



Traffic Signal Systems

Road Lighting



IEC 60896-11/ IEC 62485-2/ IEC 61427  
ISO 9001/ ISO 14001/ ISO 45001



**Sunlight Group Energy Storage Systems**  
Headquarters Greece T: +30 210 624 5400

[info@sunlight.gr](mailto:info@sunlight.gr)  
[the-sunlight-group.com](http://the-sunlight-group.com)

