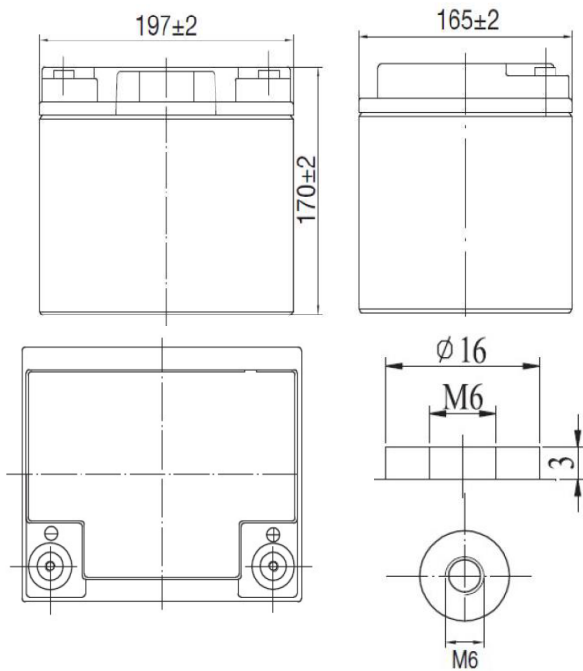


APPLICATIONS

- Uninterruptible Power Supplies (UPS)
- Electric Power Systems (EPS)
- Emergency backup power supplies
- Electronic apparatus and equipment
- Communication power supplies
- DC power supplies
- Auto control system



SPECIFICATIONS

Nominal Voltage	12 V	
Number of cells	6	
Design Floating Life (20°C)	10 years	
Dimensions	Length	197 mm
	Width	165 mm
	Height	170 mm
	Total Height	170 mm
Weight	12.5 kg	
Nominal Capacity (25°C)	20 hours rate (1.80)	42.0 Ah
	10 hours rate (1.80)	40.0 Ah
	5 hours rate (1.75)	35.7 Ah
	1 hour rate (1.65)	25.0 Ah
Internal Resistance (fully charged, 25°C)	10.2 mOhm	
Self Discharge	approx. 3% per month at 25°C	
Nominal Operating Temperature	25°C	
Operating Temperature range	Discharge	-15°C to 45°C
	Charge	0°C to 40°C
	Storage	-15°C to 40°C
Float Charging Voltage	2.27 to 2.30 V/cell at 25°C	
Temperature compensation	-18mV/°C	
Maximum charging current	10.0 A	
Maximum discharge current (25°C)	400 A (5 sec.)	
Short Circuit Current (25°C)	600 A	

PERFORMANCE DATA

Discharge Constant Current at 25°C (Amperes)

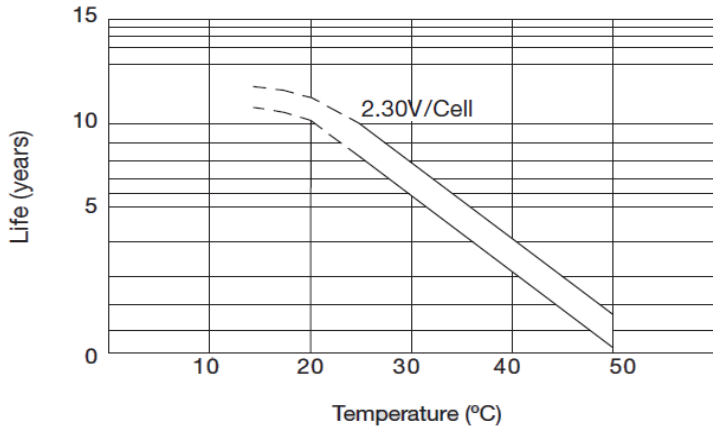
End Voltage (V/cell)	5min	10min	15min	20min	30min	45min	1h	2h	3h	4h	5h	6h	8h	10h	20h
1.60V	149	86.1	67.6	57.3	42.0	30.2	26.0	14.8	10.7	8.49	7.25	5.85	4.97	4.24	2.24
1.65V	144	83.5	66.0	55.9	40.2	29.8	25.0	14.7	10.4	8.43	7.21	5.68	4.94	4.19	2.22
1.70V	138	80.4	63.5	53.8	38.9	28.5	24.4	14.6	10.4	8.38	7.16	5.64	4.90	4.15	2.20
1.75V	132	75.3	62.0	52.0	38.0	28.4	23.9	14.4	10.2	8.32	7.14	5.59	4.87	4.07	2.15
1.80V	125	71.4	59.2	49.3	36.6	27.1	23.1	14.0	9.94	8.07	6.89	5.43	4.73	4.00	2.10

Discharge Constant Power at 25°C (Watts/Cell)

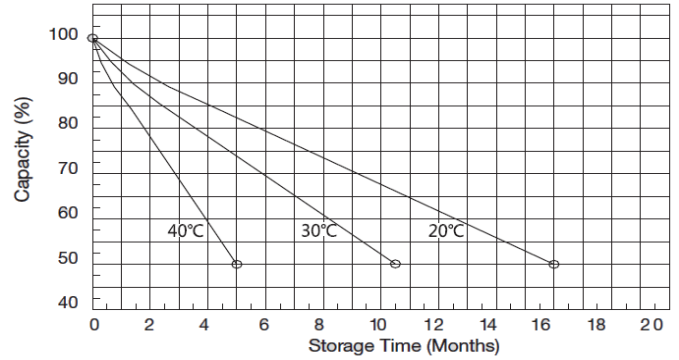
End Voltage (V/cell)	5min	10min	15min	20min	30min	45min	1h	2h	3h	4h	5h	6h	8h	10h	20h
1.60V	271	158	124	105.4	77.1	57.8	48.3	28.6	20.4	16.7	14.6	12.7	9.90	8.34	4.48
1.65V	263	150	121	102.8	75.5	56.9	47.4	28.4	20.2	16.6	14.5	12.7	9.84	8.33	4.42
1.70V	252	142	117	99.0	73.1	54.5	46.3	28.2	20.1	16.5	14.4	12.6	9.76	8.31	4.38
1.75V	241	136	113	95.7	71.4	54.3	45.4	27.8	20.1	16.4	14.3	12.5	9.70	8.27	4.28
1.80V	228	129	107	90.6	68.8	51.9	44.0	27.0	19.4	15.9	13.9	12.1	9.41	8.20	4.23

Note: The above characteristics data can be obtained within three charge/discharge cycles.

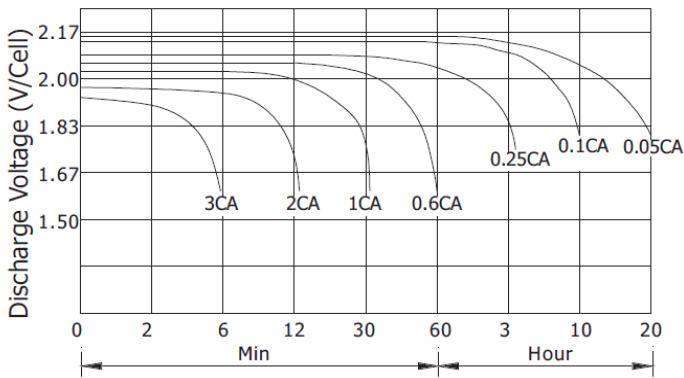
Temperature Effects on Float Life



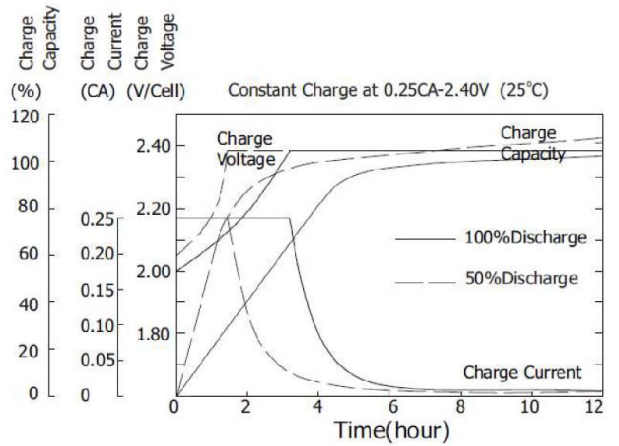
Self Discharge Characteristics



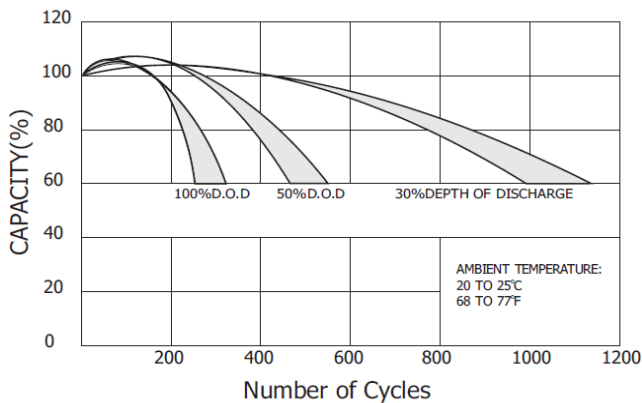
Discharge Characteristics (25°C)



Charging Characteristics (25°C)



Cycle Service Life in Relation to Depth of Discharge



Relationship Between OCV and Residual Capacity (25°C)

