

TMON ADMIN USER MANUAL

[What is TMON-admin](#)

[How it works](#)

[Working with groups](#)

[Node view](#)

[Adding main group](#)

[Adding a new UPS into the group](#)

[Deleting a group](#)

[Changing group name](#)

[Enable or disable group options](#)

[Text group list](#)

[Graphical editing](#)

[Graphical Scale adjustment](#)

[Adding new UPS](#)

[General Settings](#)

[Status icons](#)

[Toolbar functions](#)

[UPS find utility](#)

[SNMP types for connection selection from UPS properties](#)

What is TMON-admin

TMON-admin is a program which can connect more than one UPS (up to 300 UPS according to license). Program can monitor all UPS's at WAN (wide area network include internet) . User can define groups and locates UPS's in it. TMON-admin uses TCP/IP and SNMP (simple network management) protocols . SNMP protocol supports UPS SNMP agents (adapters) , TCP/IP connection supports TMON SERVER . Graphical interface provides easy monitoring.

How it works

TMON-admin uses TMON-SERVER TCP/IP protocol for receiving data from UPS. It uses polling principal with selectable intervals.

At TCP/IP connection variable length communication reduces network traffic.

The other connection type is SNMP ,user can select the predefined SNMP adaptor protocols from list and applies.

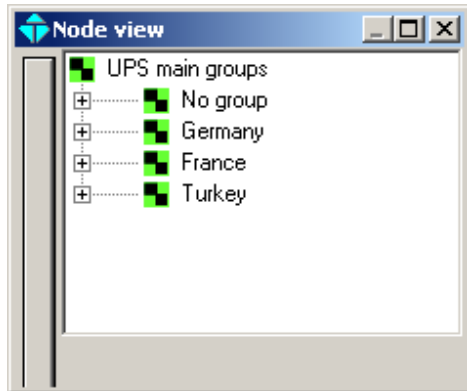
Working with groups

User can puts more than one UPS or subgroups into a group and monitors all group as an icon on desktop .If an alarm occurs at one of the UPS the group icon changes and shows an alarm. If the user clicks on group all group list comes to screen and shows UPS and group details. UPS groups can be showed in node list ,text list or graphical form. Graphical interface makes easy to understand alarm site. A graphical backplane

library is included in to the program so the user can select the UPS background MAP. The graphical view for Germany is showned at the following window. The green sinus icons shows that there is no alarm at the group.

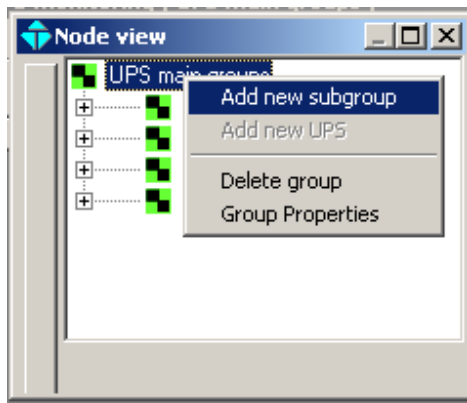
Node view

Assume that a company have some offices in germany ,france and turkey the group node view must be as followed:

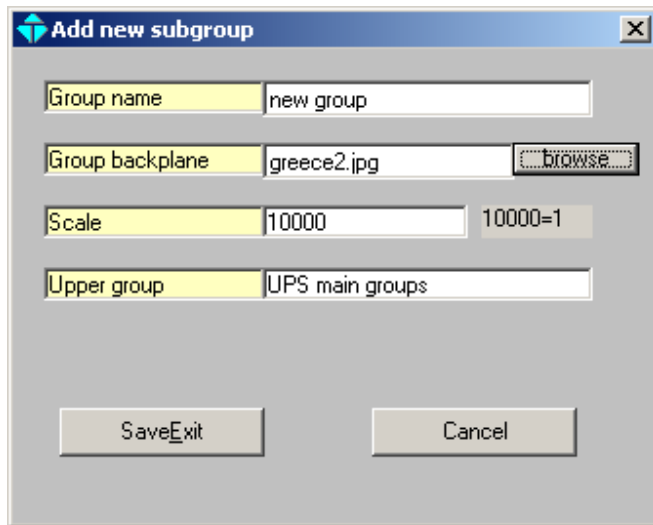


Adding main goups

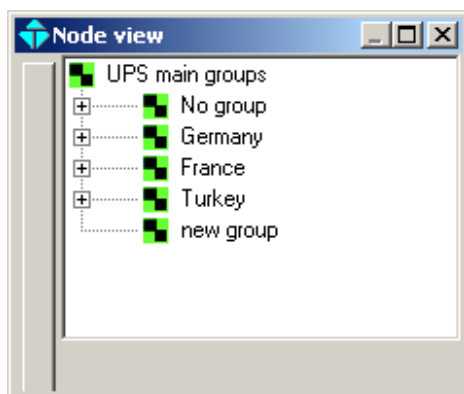
Click on UPS main groups and right click on it ,a selection menu comes on screen ,select add new subgroup item.



New group add window comes to screen type new group name ,select graphical backplane file from browse button and click on saveexit button.

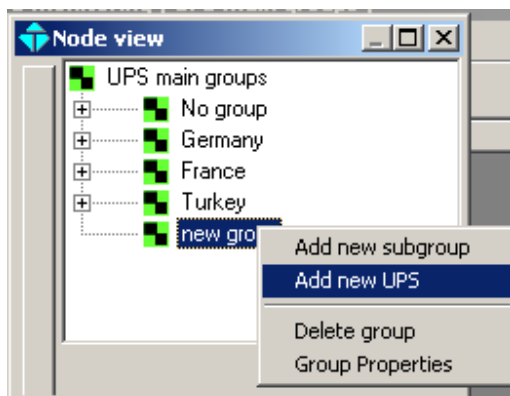


The node view will be updated . New group locates at the end of listing



Adding new UPS to group

For adding new UPS to new group right click on new group item and select Add new UPS subitem.

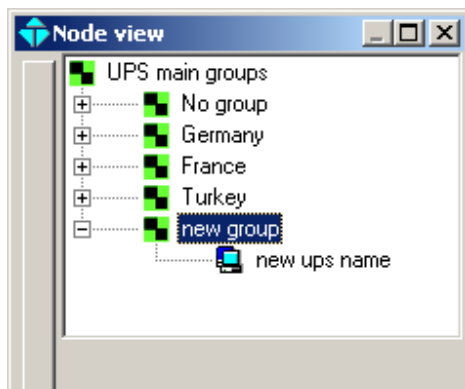


A new UPS add window comes to screen type all fields and click on saveexit button

	e-mail	SMS
Warning at line failure	<input checked="" type="checkbox"/>	<input type="checkbox"/>
Warning at battery low	<input checked="" type="checkbox"/>	<input type="checkbox"/>
Warning on Load transfer	<input checked="" type="checkbox"/>	<input type="checkbox"/>
Warning on UPS fault	<input checked="" type="checkbox"/>	<input type="checkbox"/>
Warning on battery test	<input checked="" type="checkbox"/>	<input type="checkbox"/>
Warning on shutdown	<input checked="" type="checkbox"/>	<input type="checkbox"/>
Warning on other alarms	<input checked="" type="checkbox"/>	<input type="checkbox"/>

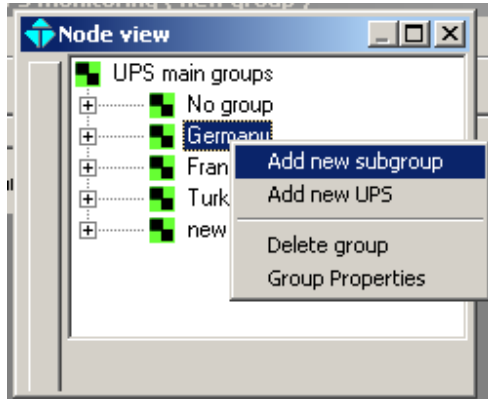
Common mask is enabled

The new UPS locates under new group left click on new group and see the node is expanded. Do this for each UPS under new group main group



Adding subgroups

Right click on GERMANY and select add new subgroup item

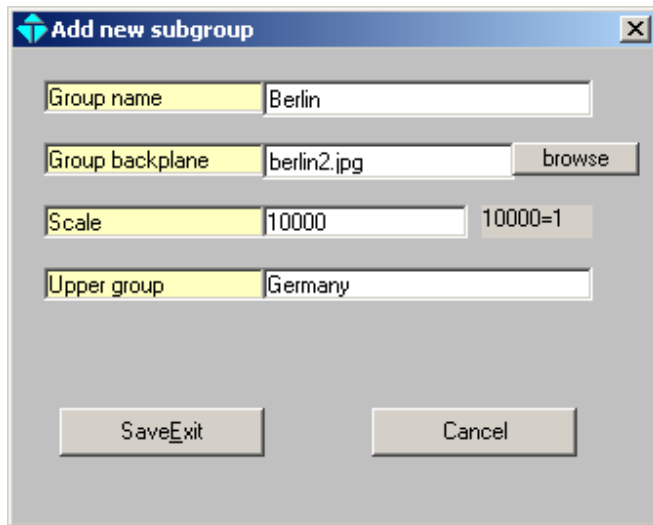


New subgroup add window comes to screen type new subgroup name ,select graphical backplane file from browse button and click on saveexit button. Do this for all groups in GERMANY. ,Into the backplane directory some country maps are included but cities are not included ,you can create city maps from google earth.

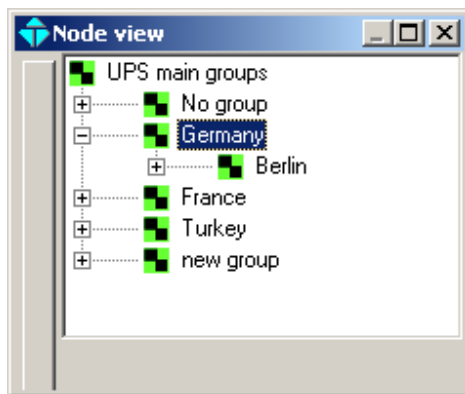
How to create city map from google earth

- 1 -Open google earth
- 2 -Find your city
- 3 -Zoom it
- 4 -Press print screen button of PC
- 5 -Open paint program
- 6 -From edit menu select paste item and locate the city map into the paint program
- 7 -Edit the map if needed
- 8 -Select Save as from file menu
- 9 -Select c:/program files/TMOM/ADMIN10/backplane folder for saving the map
- 10-Give filename as mycity2.jpg ,mycity is the name of your city for paris paris2.jpg ,for london london2.jpg
- 11-In the ADMIN program you can select this city map for any group

The map names must be saved to the same folder but the name of the picture file is different from empty form for paris the empty form file name is paris2.jpg ,the map included the city names is paris1.jpg the width and height of the maps must be same.



The node view expands as follows



You can see GERMANY map on graphic window by clicking on GERMANY item from node view



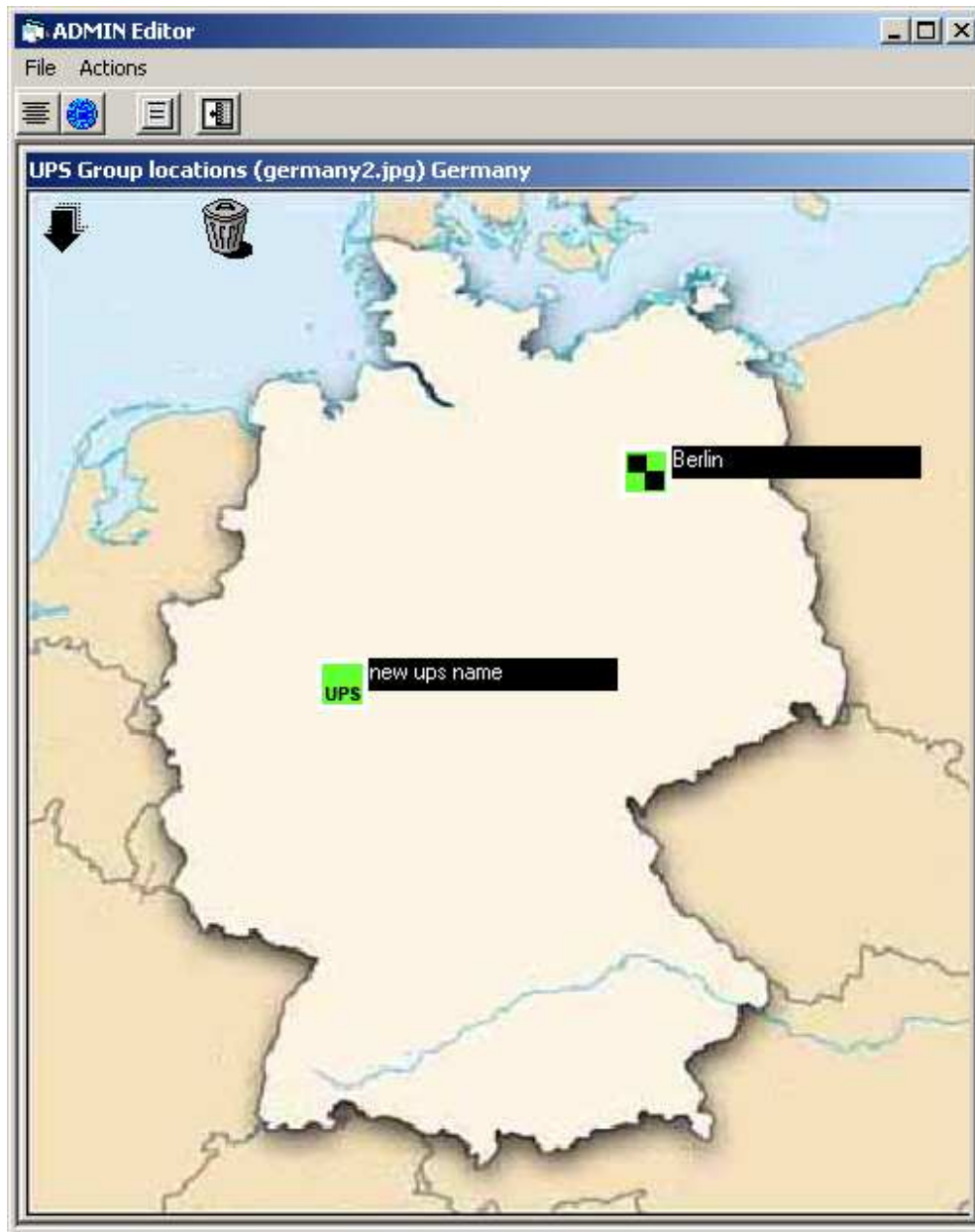
We can locate all UPS and group icons , Right Click on map ,select Graphical editing



The graphic editor program comes to screen, you can drag and drop group or UPS objects on map, assume that you added a new UPS to germany group, the start up position of the UPS icon is at the left of window you must locate it on map.



After drag the original positions are as followed . There are UPS sign on UPS icons, and the others are groups and they contains UPS's.

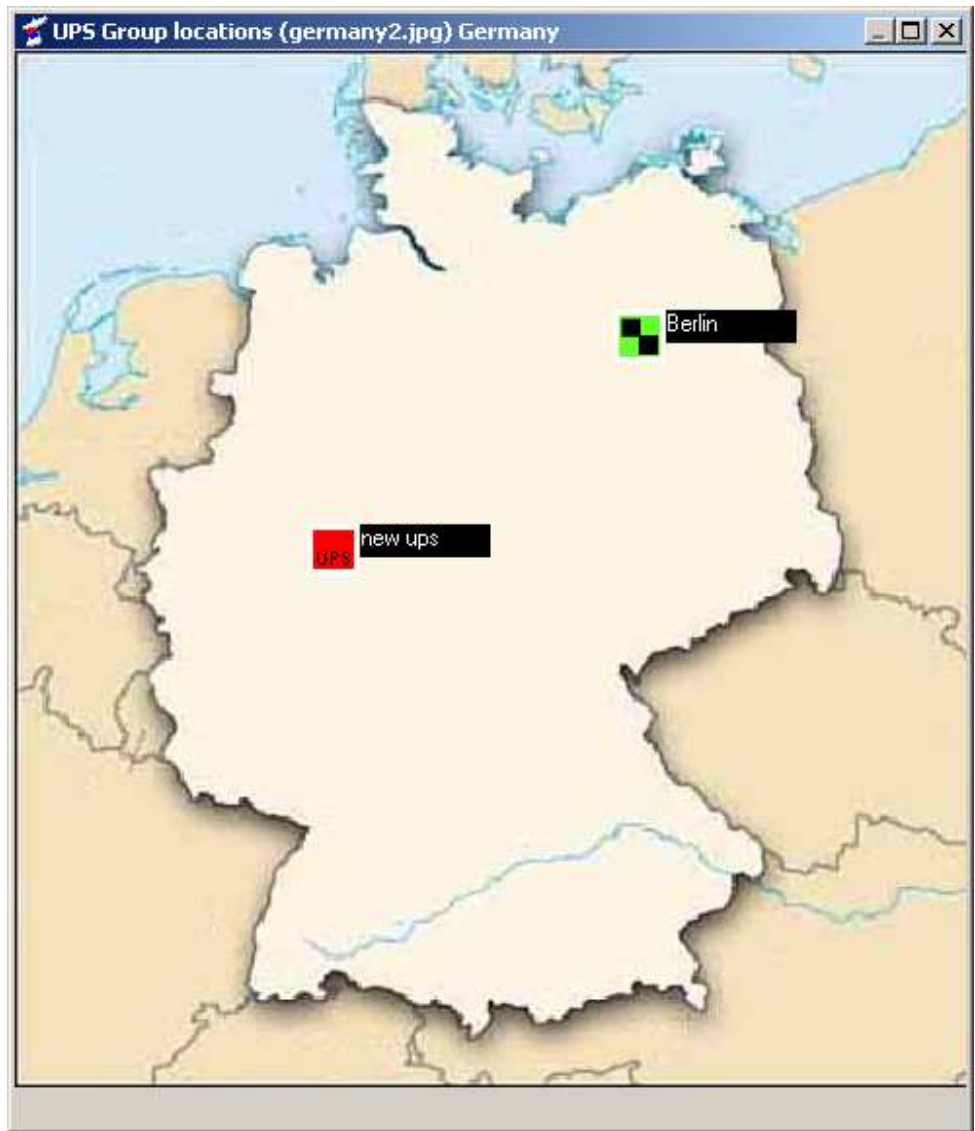


After you finished the locating goto File menu and select save subitem.

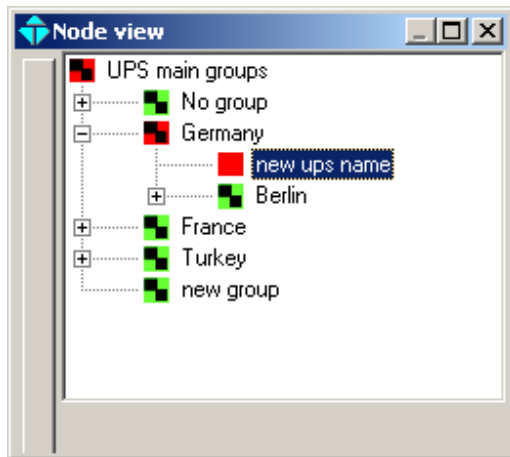


Viewing UPS alarms

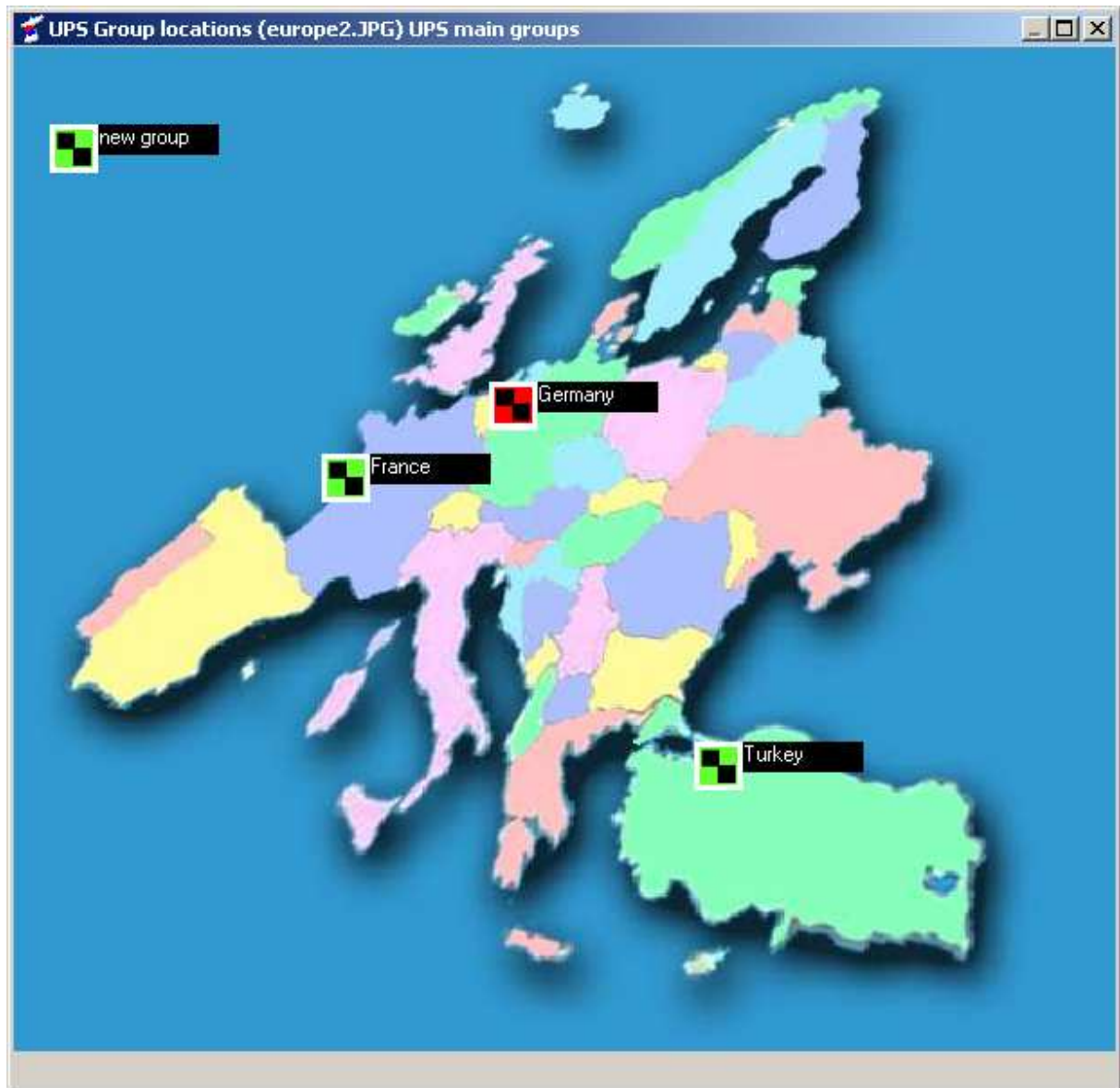
If an alarm occurs at single UPS a red icon appears on the MAP



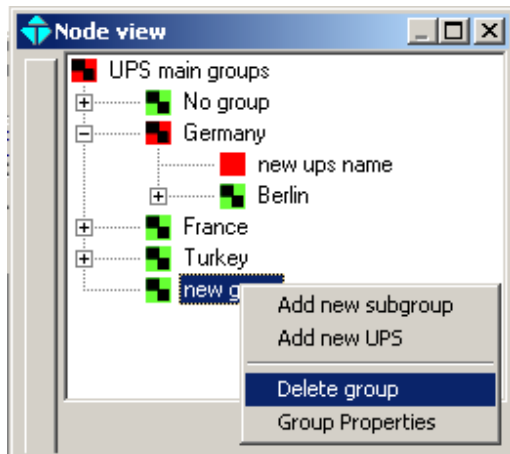
At node window you can follow Alarm. The single UPS alarm passes to the upper group



GERMANY icon at the main map shows the alarms if the alarmed UPS is included in GERMANY group.



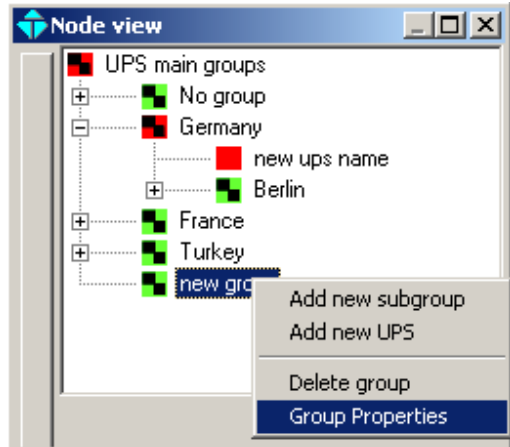
Deleting a group

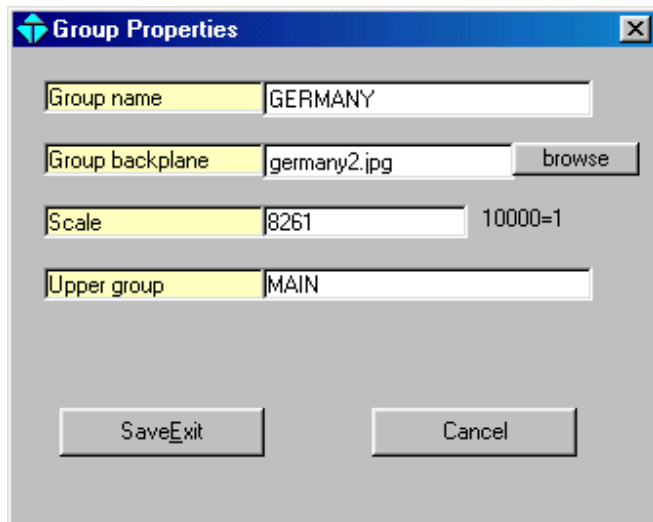


For deleting the group ,right click on group at group node window and select Delete group subitem. If a there is UPS in group all UPS's into the group will transferred to No group

Changing group names

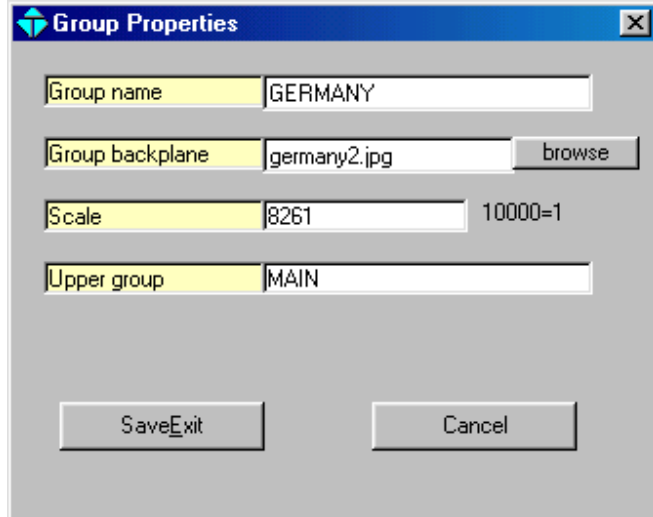
For changing group names right click on node window and select Group properties subitem , Group properties dialog comes to screen type the new group name and click on SaveExit button.



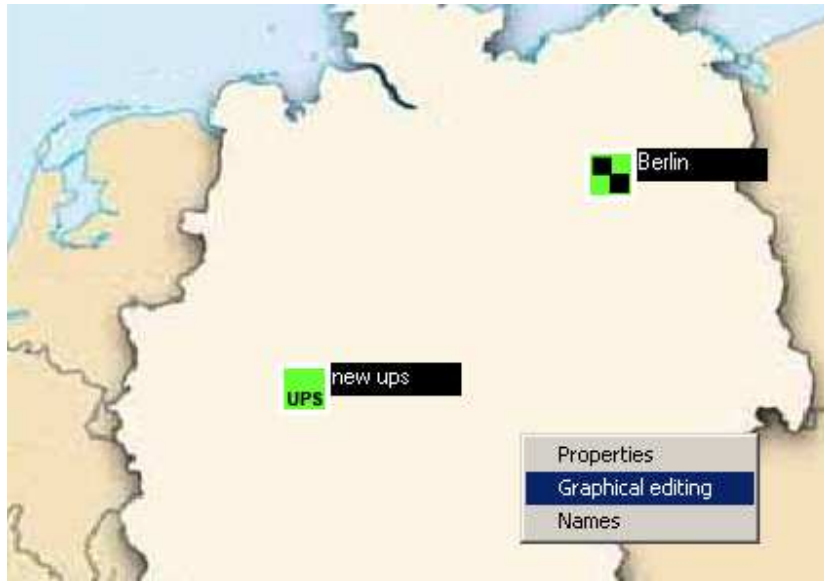


Graphical editing

User can load a custom backplane to the graphical window from group properties window, click on browse button, select the jpg file from your library and click OPEN button. The selected backplane is recorded to group properties.



For locating the groups and UPS's on to the MAP right click on map and select Graphical editing subitem



Editor program comes to screen and an arrow and a trashcan comes on graphical window . Arrow icon resets the all group locations and UPS locations to the reset position . For resetting the position of single group or UPS click on icon and drap it on to the trascan.



For locating the icons on MAP ,click on icon and drag it to the original position. Repeat this for all icons .

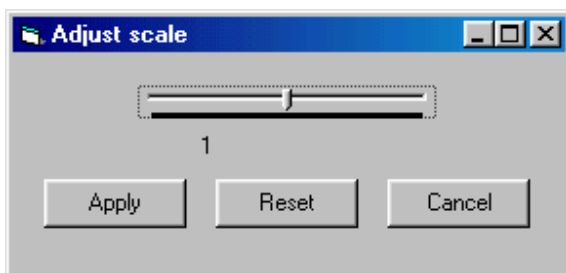


To finding places on MAP easily goto Actions menu and select names subitem the place names comes to screen



Scaling the MAP

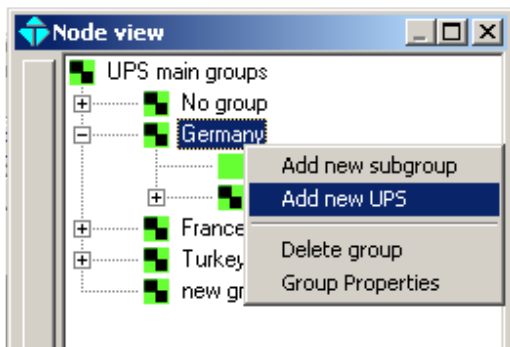
For changing the MAP size goto Actions menu and select adjust scale subitem ,scalind dialog box comes to screen ,adjust scale and click on Apply button.



If the scale is changed the group locations moves ,drag them to their original locations. If graphical editing is finished ,click on save subitem from file menu.

Adding new UPS into the group

Select group and right click on node view window and select Add new UPS subitem,An adding dialog comes to screen type all UPS information ,define alarm masks ,type all UPS information ,after finish UPS information click on SaveExit button and save UPS.



The screenshot shows a window titled "Add new UPS" with the following fields and options:

- UPS name: [Text Field]
- Site: [Text Field]
- UPS model: [Text Field]
- IP address: [Text Field]
- Polling interval: 10 [Dropdown] Seconds
- Connection: TCP/IP [Dropdown]
- Group name: Germany [Dropdown]
- UPS type: ONLINE UPS [Dropdown]
- Service contact name: [Text Field]
- Service Tel: [Text Field]
- Service GSM: [Text Field]
- Service e-mail: [Text Field]

Alarm settings table:

	e-mail	SMS
Warning at line failure	<input checked="" type="checkbox"/>	<input type="checkbox"/>
Warning at battery low	<input checked="" type="checkbox"/>	<input type="checkbox"/>
Warning on Load transfer	<input checked="" type="checkbox"/>	<input type="checkbox"/>
Warning on UPS fault	<input checked="" type="checkbox"/>	<input type="checkbox"/>
Warning on battery test	<input checked="" type="checkbox"/>	<input type="checkbox"/>
Warning on shutdown	<input checked="" type="checkbox"/>	<input type="checkbox"/>
Warning on other alarms	<input checked="" type="checkbox"/>	<input type="checkbox"/>

Buttons: SaveExit, Cancel

- UPS name: This name locates at the group UPS list as UPS name
- Site : This parameter show the site of the UPS
- UPS model : The model name of the UPS
- IP address : The connection address of the UPS
- Polling interval : The communication interval with UPS
- Connection : The connection type of the UPS (TCP/IP or SNMP types)
- Group name : The group name of the UPS
- UPS type : This field determines the UPS type (online UPS or offline UPS)










During alarms the service personnel contact information can be noted to the UPS properties window.

The checkbox list allows the user to mask unimportant alarms. If the checkbox is checked related event e-mail or message sending will be triggered.









An e-mail send utility is installed into the TMON-admin ,user can mask e-mail sending during alarms.

An SMS send utility is installed into the TMON-admin ,user can mask SMS messages during alarms. For SMS message sending you must connect an GSM modem to the PC serial port.


Toolbar functions are as followed

-  show UPS list as small icons
-  show UPS list details
-  show UPS group windows
-  hide UPS group windows
-  settings
-  disable UPS communication
-  enable UPS communication
-  edit UPS information
-  add new UPS

UPS Status icons

-  Load on UPS
-  Load on bypass
-  UPS fault
-  UPS normal
-  UPS alarm occurring
-  Trying to establish communication
-  There is a trap message from UPS
-  UPS is in trap mode (listening only not polling)

Group status icons

-  There is an alarm into the group

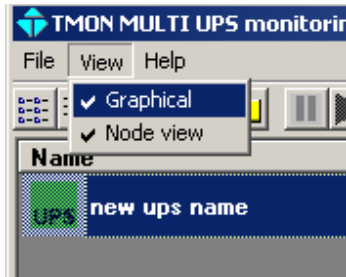


Group is normal



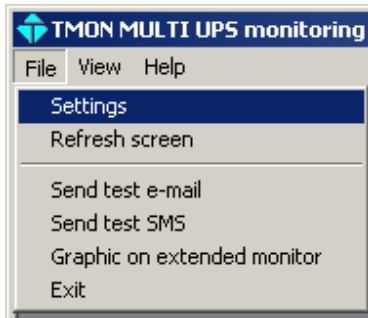
There is a trap message in the group

Enable and disable group options



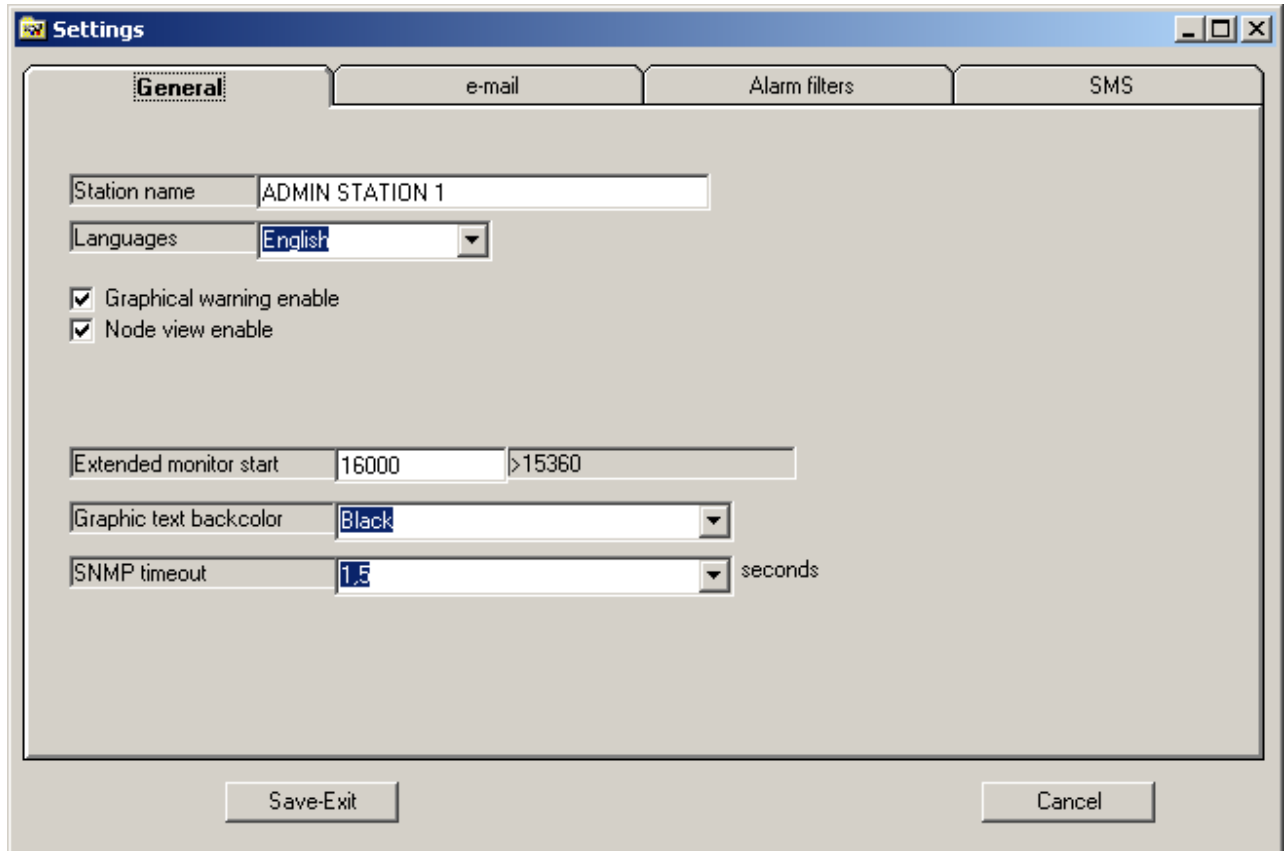
User can enable or disable group screen types click on View menu check or uncheck the options

Settings



Goto File menu and select settings subitem the settings window comes to screen type station name ,select program language and set the group screen settings.

You can use 2 monitors side by side with T-MON ADMIN program at the first screen list view and node view will be showned ,at the second monitor graphic window will be showned ,the default extended monitor left position according to the first monitor left start position is 16000 for 1024x768 screen you can change this value according to your screen resolution. There are UPS and group names at the side of icons ,you can define the background of this names from Graphic text bgcolor options. SNMP timeout value must be modified at slow networks.



e-mail settings

TMON-ADMIN can send e-mail to 3 recipients from internet, click on e-mail tab and type e-mail information. Fill all fields correctly and check e-mail send enable checkbox. E-mail send mask for each UPS must be set from UPS properties, otherwise e-mail send option does not run.

The screenshot shows a 'Settings' window with four tabs: 'General', 'e-mail', 'Alarm filters', and 'SMS'. The 'e-mail' tab is active. The settings are as follows:

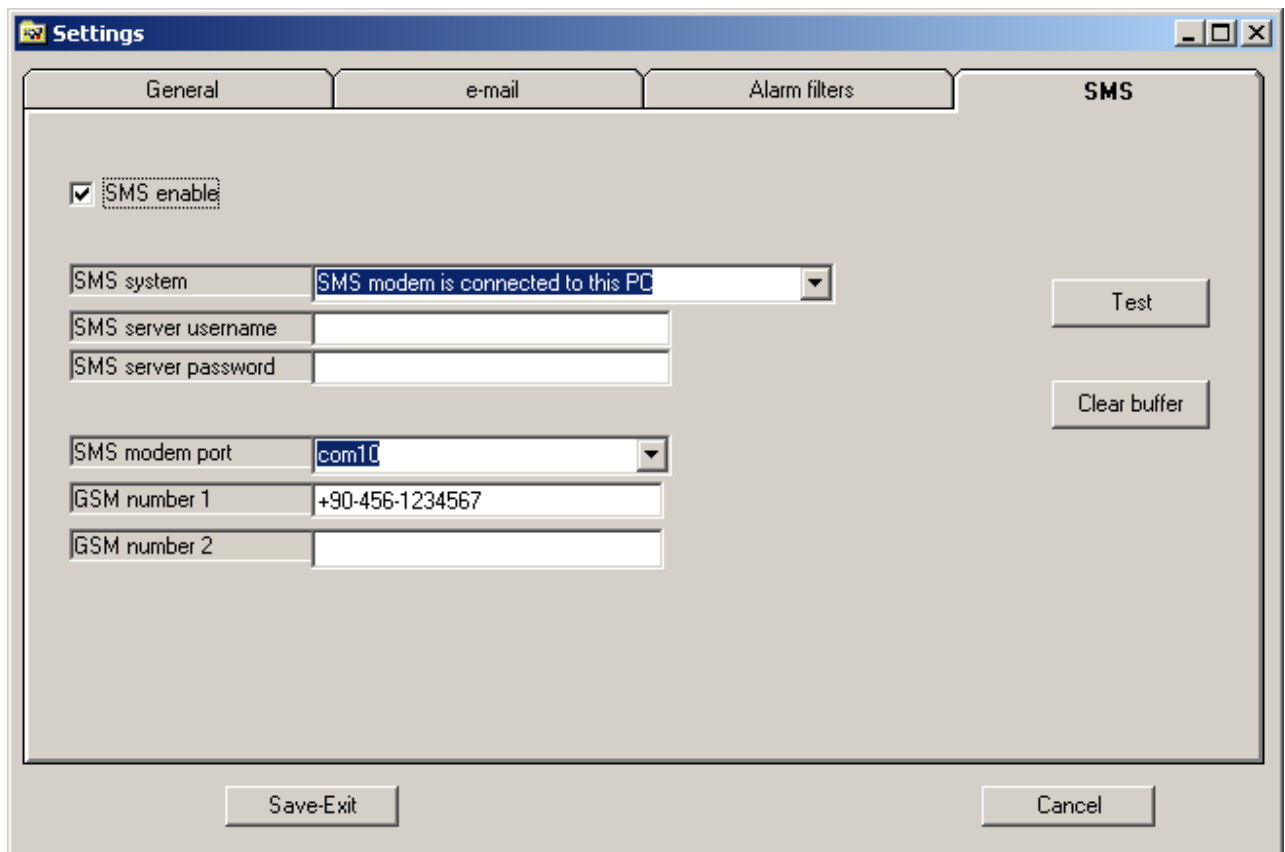
- e-mail send enable
- Subject: Admin station 10.0.0.142
- SMTP host: mail.mycompany.com
- Sender address: henry@mycompany.com
- Sender name: henry long
- Buttons: Test, Clear buffer
- Recipient address and name table:

Recipient address	Recipient name
john@service.com	john terry
- Use POP3 Authentication
- POP3 Host: [empty]
- Use Authentication
 - User name: username
 - Password: password
- Buttons: Save-Exit, Cancel

SMS message sending settings

T-MON ADMIN program can send SMS messages to 2 GSM numbers at the same time during alarms ,check the SMS enable ,if the GSM modem is connected to this PC select SMS MODEM IS CONNECTED TO THIS PC option ,in this case you don't need username and password ignore it.

Select GSM modem serial port , type GSM number that's all.

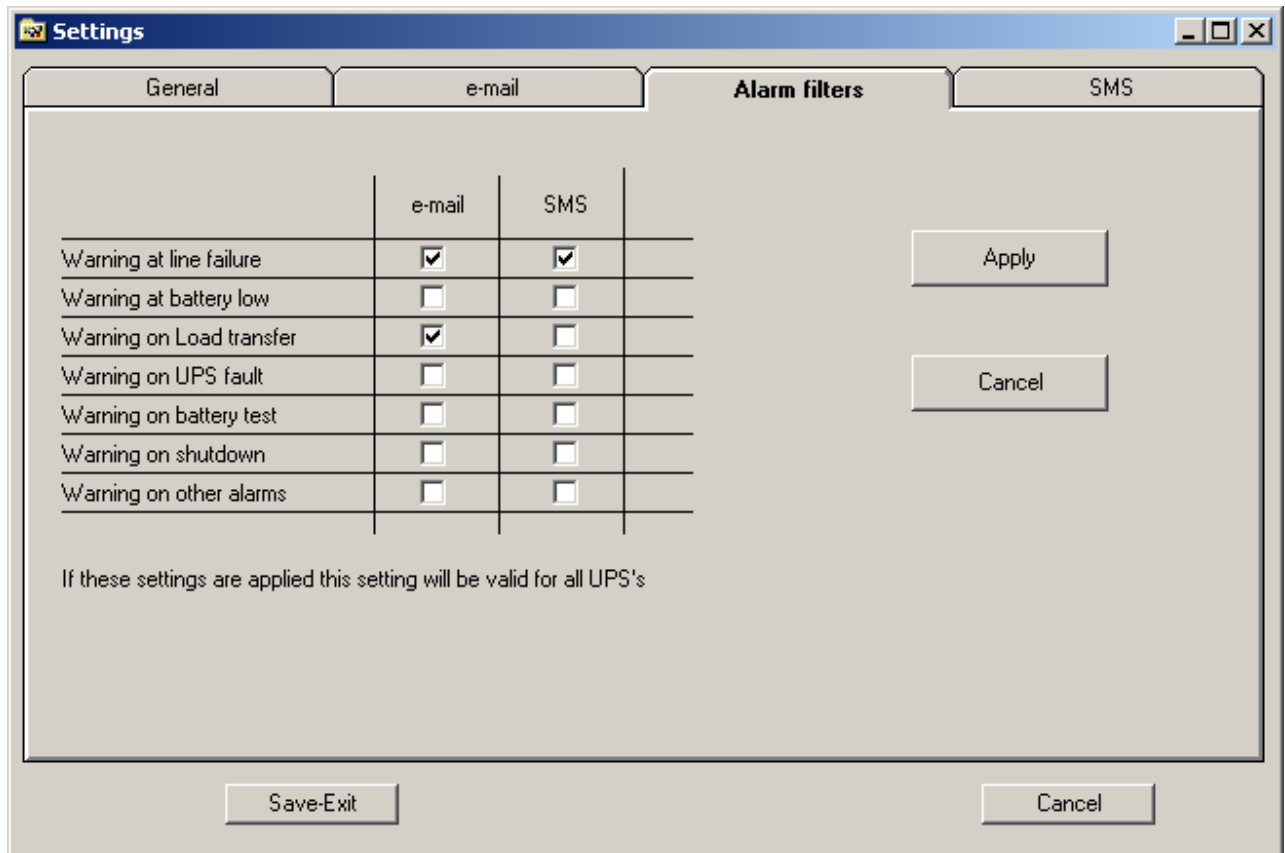


Alarm filters

You can set alarm behaviour for e-mail and SMS sending at the following window ,in this sample program sends e-mail and SMS at line failure message.

At Load transfer(bypass) event only sends e-mail

Do not forget to click on Apply button

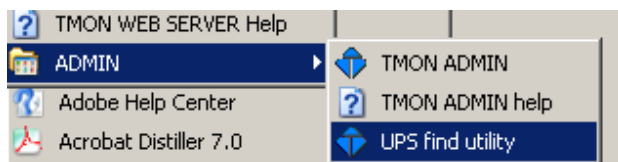


Important : At the end of settings click on Save button and save settings.

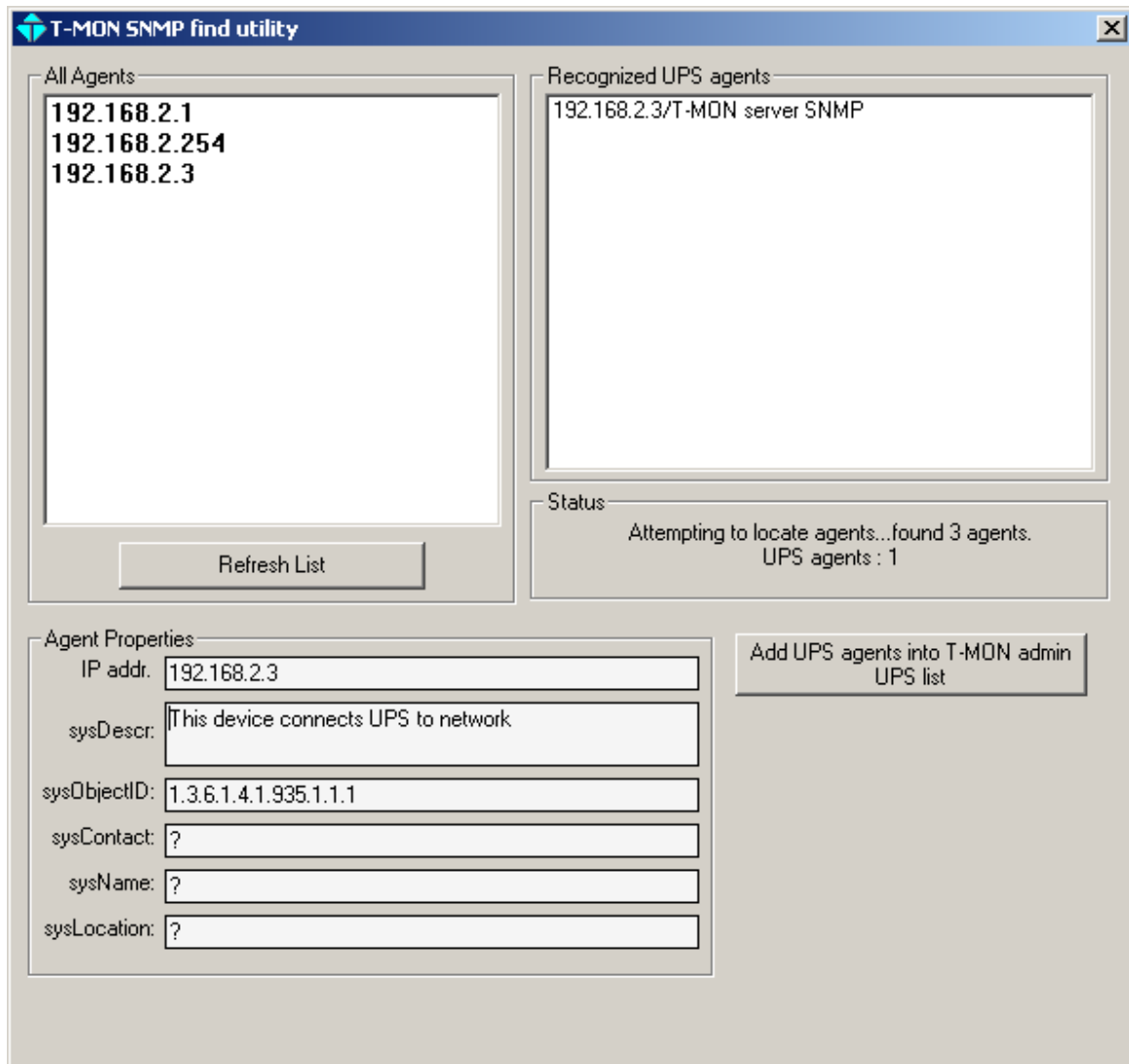
UPS find utility

A program which can find all UPS's in your local network is included into the ADMIN software pack ,the name of the program is UPS find utility.

To start this program after first ADMIN installation START/All programs/TMON/ADMIN and click on UPS find utility



The program will run and the following window comes to screen.



At the left listbox you can see all SNMP based devices into the your network ,and at the right side you can see the only recognized UPS SNMP agents. After the lists are filled click on Add UPS agents into T-MON admin button ,the program will add these UPS's into the un group section. Then you can put the UPS's to their original groups into the ADMIN software.

But program can not know the UPS name ,UPS site connection type please set these parameters from UPS properties window.

SNMP types for connection selection from UPS properties

Connection	Selection from UPS properties
TMON-SERVER (TCP/IP)	TCP/IP
TMON-SERVER (SNMP) 1 ph in/1 ph	SNMP TMON 1/1

out	
TMON-SERVER (SNMP) 3 ph in/1 ph out	SNMP TMON 3/1
TMON-SERVER (SNMP) 3 ph in/3 ph out	SNMP TMON 3/3
Net agent II (3 phase UPS)	SNMP MEGATEC 3/3
Net agent II (1 phase UPS)	SNMP MEGATEC 1/1
USHA SNMP ADAPTOR 1 ph in/1 ph out	SNMP USHA 1/1